



OWNER'S MANUAL
BEDIENUNGSANLEITUNG
MODE D'EMPLOI
MANUAL DE INSTRUCCIONES
www.ianbfoto.com

FUJI AE FINDER FL

for GX680 Professional



FUJI PHOTO FILM CO., LTD.

26-30, Nishiazabu 2-chome, Minato-ku, Tokyo 106, Japan.

< Fuji Film Abroad >

- In North America** **FUJI PHOTO FILM U.S.A., INC.**
555 Taxter Road, Elmsford, N.Y. 10523, U.S.A.
FUJI PHOTO FILM CANADA INC.
5915, Ave., Coopers, Mississauga, Ontario, L4Z 2Y6, Canada
FUJI PHOTO FILM HAWAII, INC.
1650 Kalakaua Avenue, Honolulu, Hawaii 96826
- In Europe** **FUJI PHOTO FILM (EUROPE) G.m.b.H.**
Heesenstr. 31, 4000 Dusseldorf 11, Postfach 190321, West Germany
FUJI PHOTO FILM (U.K.) LTD.
Fuji Film House, 125 Finchley Road, Swiss Cottage, London NW3 6JH, England
- In South America** **FUJI PHOTO FILM DO BRASIL LTDA.**
Av. Ver. Jose Diniz 3465, CEP 04603, C.P.9959, S.Paulo, Brazil
- In Asia** **FUJI PHOTO FILM CO., LTD., HONG KONG OFFICE**
Rm. 2704, Admiralty Centre, Tower 1, 18 Harcourt Road, Hong Kong
FUJI PHOTO FILM (SINGAPORE) PTE. LTD.
101 Thomson Road, 32-00 Goldhill Square, Singapore 1130
FUJI PHOTO FILM CO., LTD., BANGKOK OFFICE
6th Floor, Inchcape House, 2160 Ramkhamhaeng Road, Hua Mark, Bangkok 10240, Thailand
FUJI PHOTO FILM CO., LTD., TAIPEI OFFICE
Rm. 501 Hung Chong Bldg., No. 20, Chiling Road, Taipei 10424, Taiwan
FUJI PHOTO FILM CO., LTD., SEOUL OFFICE
Han Boo Bldg., 30-1, Mukjung-dong, Chung-ku, Seoul, Korea
FUJI PHOTO FILM CO., LTD., BEIJING REPRESENTATIVE OFFICE
Beijing Hotel. Room No. 6053, Dong Chang An Street, Beijing, China
- In Oceania** **FUJI PHOTO FILM CO., LTD., SYDNEY REPRESENTATIVE OFFICE**
c/o Hanimex Pty. Limited, Old Pittwater Road, Brookvale, N.S.W. 2100, Australia

OWNER'S MANUAL

This manual will show you how to use your Fuji AE Finder FL correctly. Please follow the instructions carefully.

English (Page 4 - 12)

See illustrations while you read this manual.

Bedienungsanleitung

Diese Anleitung beschreibt die korrekte Handhabung Ihres Fuji Belichtungsautomatksuchers FL. Richten Sie sich bitte nach den hier gegebenen Anweisungen.

Deutsch (Seite 13 - 22)

Orientieren Sie sich beim Durchlesen dieser Anleitung bitte an den Abbildungen.

MODE D'EMPLOI

Ce mode d'emploi contient les informations nécessaires pour vous permettre d'utiliser correctement votre Viseur FL AE Fuji. Nous vous recommandons de suivre attentivement les instructions.

Français (Pages 23 - 31)

Se reporter aux illustrations en lisant le mode d'emploi.

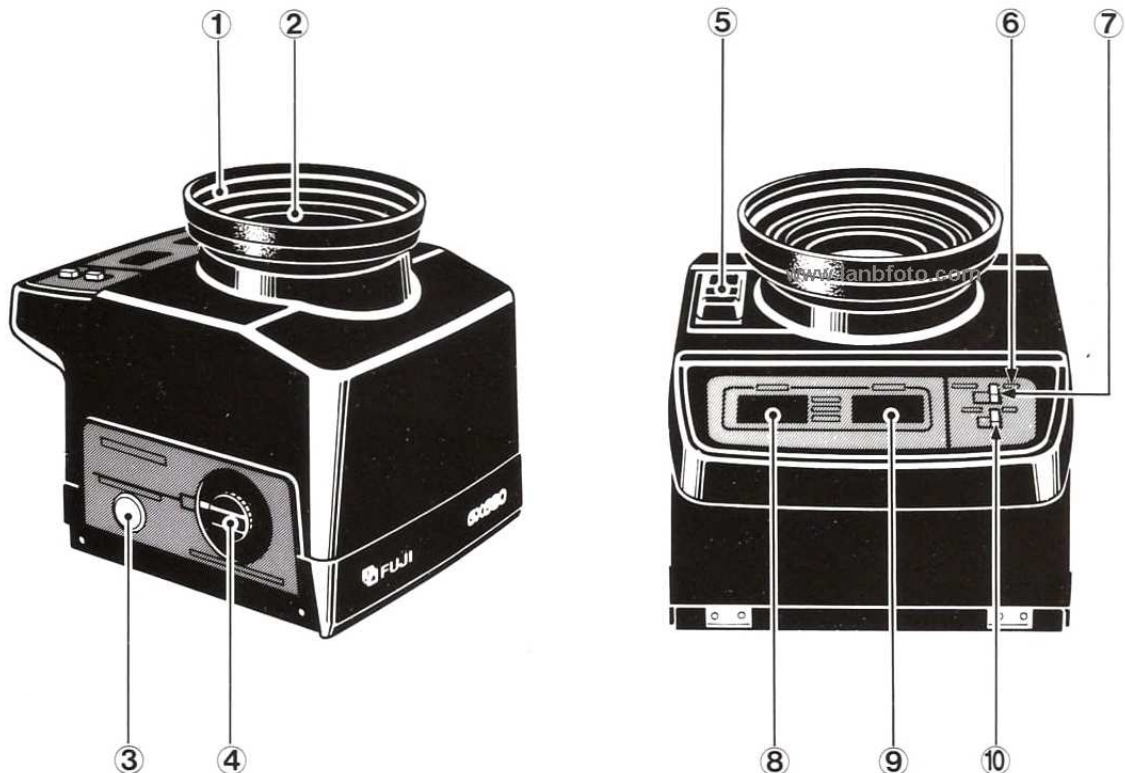
MANUAL DE INSTRUCCIONES

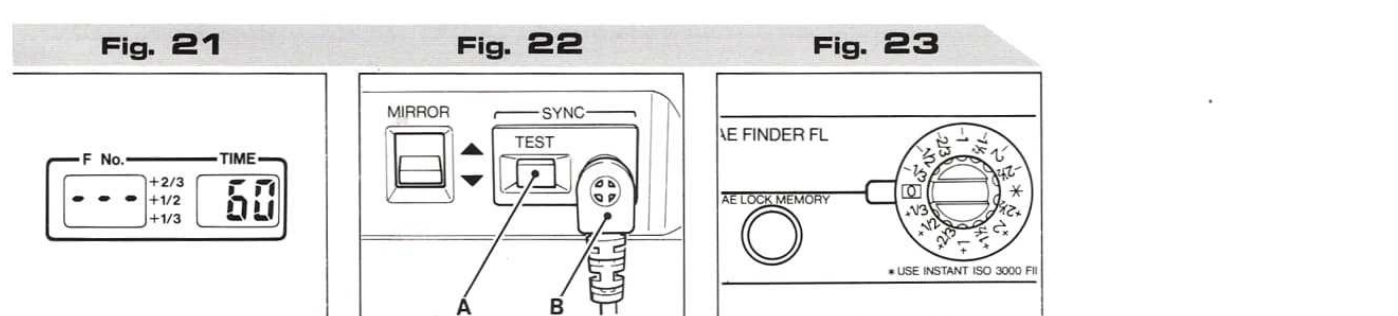
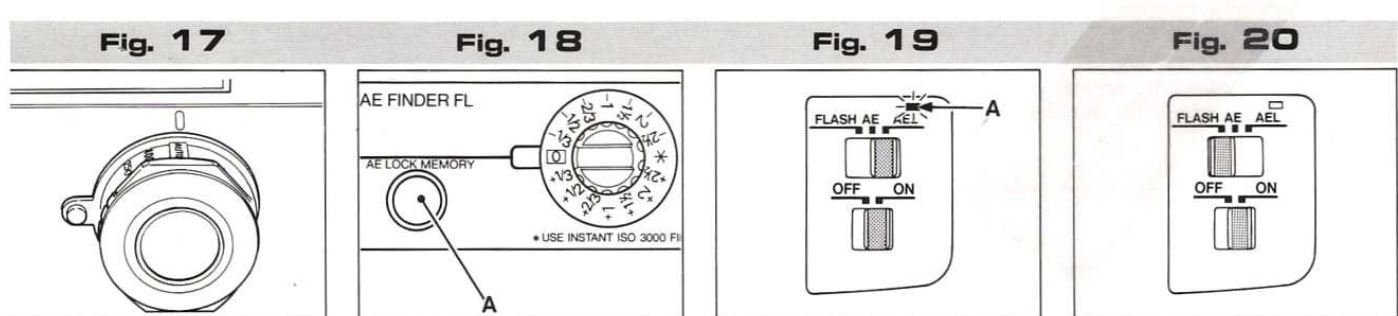
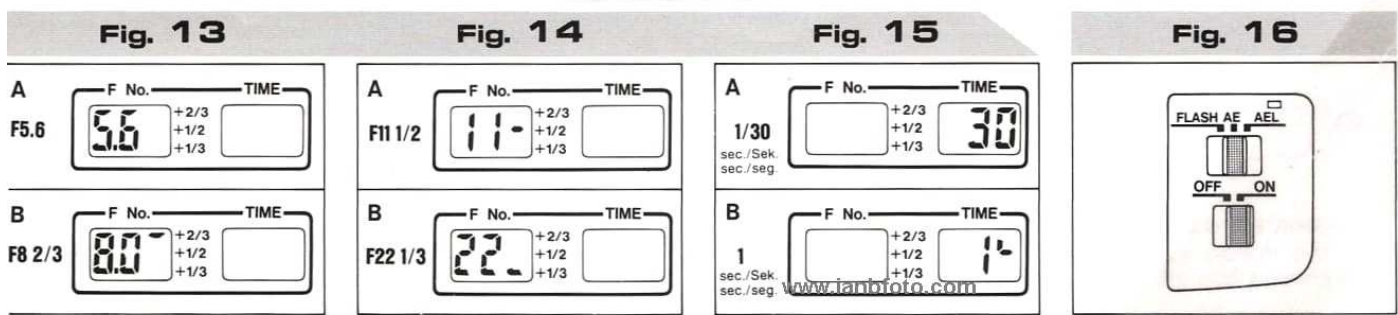
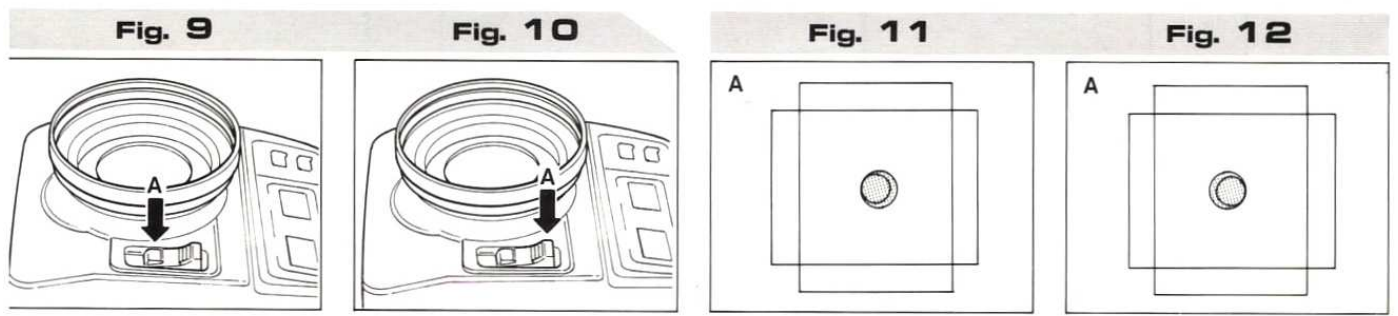
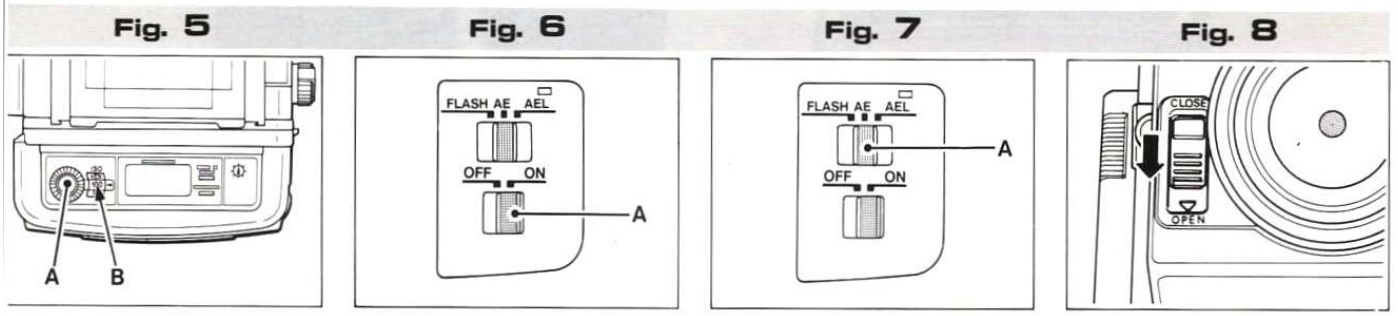
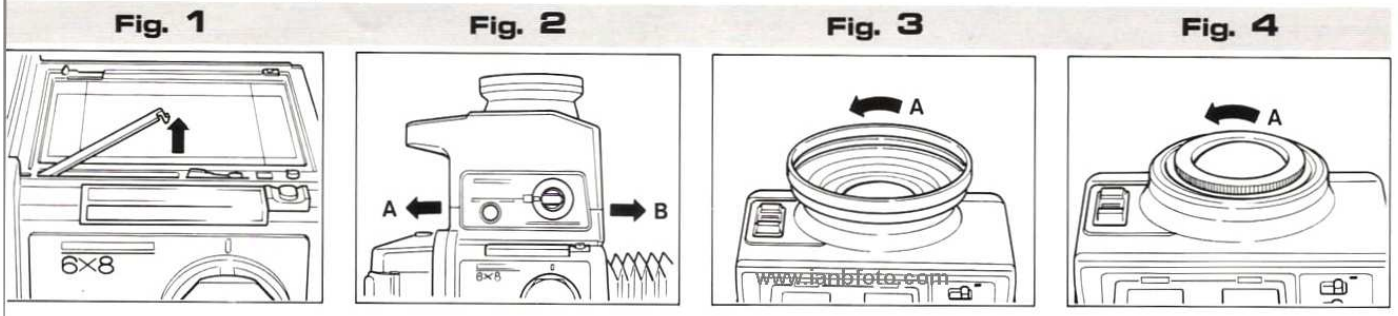
Este manual le explica cómo manejar correctamente su Visor Fuji FL de Exposición Automática. Sírvase seguir atentamente las instrucciones.

Español (Página 32 - 41)

Consulte las ilustraciones mientras lee este manual.

NAMES OF PARTS/BEZEICHNUNG DER TEILE/NOMENCLATURE/NOMENCLATURA





CONTENTS

NAMES OF PARTS4
SPECIAL FEATURES4
I. GETTING READY TO TAKE PICTURES4
 1. Mounting and dismounting the AE Finder FL4
 2. Attaching and detaching the eyecup5
 3. Changing the AE finder's magnifying glass5
 4. Setting the film speed selector5
 5. Power source5
 6. Main switch5
 7. Selecting the light-metering mode5
 8. Using the eyepiece shutter5
II. A FEW THINGS THAT YOU SHOULD KNOW BEFOREHAND6
 1. Light-metering system and metering area6
 2. Reading the liquid-crystal display (LCD)6
III. TAKING PICTURES7
 1. Taking aperture-priority auto-exposure pictures7
 2. Using the AE lock7
 3. Taking aperture-priority manual exposure pictures8
 4. Using the AE Finder FL as a flash meter8
 5. Making exposure compensations9
 6. Taking pictures with instant film9
 7. Using the SF190mm lens10
 8. Using camera movements (tilts, swings, etc.)10
FINDER CARE10
SPECIFICATIONS11

NAMES OF PARTS

- ① Eyecup
- ② Finder Magnifying Glass
- ③ AE Lock Button
- ④ Fractional Exposure Control
- ⑤ Eyepiece-shutter Button
- ⑥ AE Lock Memory Indicator
- ⑦ Mode Switch
- ⑧ Aperture (F No.) Display Window
- ⑨ Shutter Speed (Time) Display Window
- ⑩ Main Switch

SPECIAL FEATURES

- 1. Your AE Finder FL is an aperture-priority auto-exposure finder which measures the brightness of the camera's viewfinder screen with its light sensor and computes the correct shutter speed with its built-in microprocessor.
- 2. It also functions as a flash meter for controlling flash exposures.
- 3. A unique, easy-to-use finder, it shows the selected aperture and computed shutter speed on a large liquid-crystal display.
- 4. It provides center-weighted SPD light metering and is equipped with an AE lock.

I. GETTING READY TO TAKE PICTURES

1. MOUNTING AND DISMOUNTING THE AE FINDER FL

First, remove the camera's finder hood and the electric-contact cover located alongside the camera's finder screen. You cannot mount the AE Finder without removing this cover. (Fig. 1)

To mount, insert the hooks in the bottom of the AE Finder into the holes along the edges of the camera's finder screen

then slide the AE Finder toward the camera back. To dismount, while pressing in the camera's finder lock, slide the AE Finder toward the camera front. (Fig. 2)

- Mounting (Fig. 2-A)
- Dismounting (Fig. 2-B)

2. ATTACHING AND DETACHING THE EYECUP

The Eyecup is the screw-in type. To attach, fit it on and turn it to the right. To detach, turn it to the left. (Fig. 3)

Detaching (Fig. 3-A)

Note:

When photographing the camera's finder-screen image, be sure to use the Eyecup to cut off extraneous light from entering the eyepiece.

3. CHANGING THE AE FINDER'S MAGNIFYING GLASS

The AE Finder's Magnifying Glass has a bayonet screw and is dismounted by turning it to the left. (Fig. 4)

- The refractive power of the AE Finder's standard magnifying glass is -1 diopter. Magnifying glasses of -4 to +3 diopters (the same as those used on the GX680's finder hood) are also available at an extra cost so be sure to obtain one that suits your vision.

Dismounting (Fig. 4-A)

4. SETTING THE FILM SPEED SELECTOR

Set the GX680's film speed selector (located on the camera's film holder) to the speed of the film loaded in the camera. (Fig. 5)

- Film Speed Selector (Fig. 5-A)
- Film Speed Markings (Fig. 5-B)

5. POWER SOURCE

The AE Finder FL uses the same power source as the GX680 Camera. Power is turned on by turning on the Camera's main switch.

Note:

Power automatically switches off and the AE Finder won't operate when the camera lens is dismounted or the mirror is up.

6. MAIN SWITCH

To turn on the AE Finder's liquid-crystal display, first turn on the Camera's main switch then turn on the AE Finder's Main Switch. (Fig. 6)

Main Switch (Fig. 6-A)

Note:

If you are not using the AE Finder, turn off its Main Switch. Though it has no power supply of its own, its internal electric circuits and liquid-crystal display will consume the Camera's power if the Main Switch is on.

7. SELECTING THE LIGHT-METERING MODE

The AE Finder can be set to the FLASH, AE, and AEL (AE Lock) modes. (Figs. 7)

Mode Switch (Fig. 7-A)

8. USING THE EYEPiece SHUTTER

The AE Finder is provided with an Eyepiece Shutter to prevent extraneous light from entering it.

- If you check the finder-screen image through the AE Finder then take your picture with your eye off the Finder, extraneous light will enter it and spoil your picture.

Note:

Be sure to close the Eyepiece Shutter before taking pictures.

If you take pictures with the Eyepiece Shutter open, you cannot get correct exposure.

(1) Opening the Eyepiece Shutter

To open, place your finger on the near end of the Eyepiece-shutter Button then slide the Button toward OPEN. To close, just take your finger off the Button. (Fig. 8)

- With the Eyepiece Shutter closed, you'll be able to see through the Eyepiece the white spot that marks the center of the Eyepiece Shutter Blade.

(2) Holding the Eyepiece Shutter in "Open" Position

To open the Eyepiece Shutter and hold it in "Open" position, slide the Eyepiece-shutter Button toward you then press down the front end of the Button. (Fig. 9)

Holding in "Open" Position (Fig. 9-A)

(3) Releasing the Eyepiece Shutter from "Open" Position

To release the Eyepiece Shutter from "Open" position and close it, just press down the near end of the Eyepiece-shutter Button. (Fig. 10)

Close (Fig. 10-A)

II. A FEW THINGS THAT YOU SHOULD KNOW BEFOREHAND

1. LIGHT-METERING SYSTEM AND METERING AREA

The AE Finder FL's exposure meter is the TTL-reflected-light-metering type. It measures on the finder screen the amount of light which comes through the camera lens from the scene being photographed.

The advantage of this system is its effectiveness in measuring the brightness of hard-to-approach subjects, close-up subjects that need calculation of exposure factors, trans-illuminated subjects, and light-emitting subjects such as neon signs.

6

● **With the Finder Set to the Flash Mode**

The correct aperture value for the flash as measured through the lens will appear in the LCD in 0, 1/3, 1/2, and 2/3 stop units.

(2) Shutter Speed Indications

The LCD displays the shutter speeds numerically. Only the denominators of the fractions of a second 1/2 - 1/400 will show in the LCD. The numbers 1 to 8 represent full seconds and the letter "L" next to these numbers stands for "long exposure". (Fig. 15)

● **With the Finder Set to the AE Mode**

The LCD displays in 1/3-step units the correct shutter speed obtained through the regular aperture-priority TTL light metering method.

● **With the Finder Set to the Flash Mode**

The LCD displays the shutter speed that has been set with the GX680's shutter speed selector.

(3) Beyond-the-Interlocking-Range Warnings

● **With the Finder Set to the AE Mode**

If the setting is not within the Finder's interlocking range, either the 1/400-sec. or 8-sec. indicator will turn on in the LCD and blink.

● **With the Finder Set to the Flash Mode**

Either the maximum lens f-number or the F64 sign will turn on in the LCD and blink.

Note:

If the number in the LCD blinks, set the aperture within interlocking range if the Finder is in the AE Mode, and adjust the flash's light quantity to within interlocking range if the Finder is in the Flash Mode.

(4) Trouble Warnings

If the sign EE0, EE1, EE2, or EE4 turns on and blinks in the LCD, the electric contacts of the GX680 Camera and its

The disadvantage is that since it measures the overall brightness of the subject, including the intensity of the illuminating light as well as subject reflectance, you will always get average light readings regardless of whether you measure the clear (white) or the dark (black) area of the subject. In short, the important point is which part of the subject (which is made up of all sorts of reflection ratios and presents itself under varied exposure conditions) should be measured. But with a clear understanding of what is involved, it is possible to expose for specific parts of the subject or to depict subject detail regardless of whether the subject is, as a whole, bright (white) or dark (black). That is why you should know exactly which part of the finder-screen image the AE Finder measures. Although the measuring area differs somewhat depending on whether the AE Finder is set to the AE or the Flash mode, just remember that it measures the central area of the finder-screen image. (Figs. 11 & 12)

Light-metering Area on the Finder Screen

AE Mode (Fig. 11-A)

Flash Mode (Fig. 12-A)

2. READING THE LIQUID-CRYSTAL DISPLAY (LCD)

(1) Aperture Value Indications

The LCD displays the f-numbers numerically. If a short bar appears to the right of the f-number, it means +1/3, +1/2, or +2/3 stop has been added to the f-number. (Figs. 13 & 14)

● **With the Finder Set to the AE Mode**

The aperture value that will show in the LCD is the value that has been selected with the camera's aperture selector. The aperture values in this case will be shown in 1/2-stop units. The LCD will not show 1/3-stop values.

To use an intermediate f-number, you'll have to set the camera's aperture selector between the numbers on the lens aperture scale.

interchangeable lens or those of the Camera and AE Finder FL are not properly connected. In this case, clean the contacts then remount the lens or AE Finder.

III. TAKING PICTURES

1. TAKING APERTURE-PRIORITY AUTO-EXPOSURE PICTURES

- ① Turn on the main switch of the GX680 Camera and that of the AE Finder FL. (Fig. 16)
 - ② Set the GX680's shutter speed selector to AUTO. (Fig. 17)
 - ③ Set the GX680's lens aperture to suit the subject you are taking.
 - ④ Frame your picture, focus the lens, then close the AE Finder's Eyepiece Shutter. The AE Finder will automatically compute the correct shutter speed for the brightness of your subject to let you take your aperture-preferred AE picture.
- The LCD will show you the selected aperture value and computed shutter speed.

2. USING THE AE LOCK

If the area in the center of the AE Finder FL locks too bright or too dark when you frame the camera's finder-screen image, or if the contrast is too harsh, use the AE Lock to set exposure.

- ① The basic procedure is the same as that for taking aperture-priority auto-exposure pictures except that you'll have to set the AE Finder's Mode Switch to AEL (AE Lock).
- ② With the light-sensing sector of the finder (the central area of the screen), frame the part of the subject that has an average-density hue.

- ③ While holding the finder in that position, press in the AE Lock memory Button located on the right hand side of the AE Finder FL. (Fig. 18)

The AE Lock is activated by pressing the button and released by pressing it again. (Fig.18-A)

- ④ As soon as you press in the AE Lock Button, a red LED (AE Lock Memory Indicator) just above the Mode Switch will turn on to tell you that the exposure setting has been locked (committed to memory). (Fig. 19)

The red LED turns on when the exposure setting is locked. (Fig. 19-A)

- ⑤ Next, reframe the finder-screen image then press down the Camera's shutter release to take your auto-exposure picture.

- After the shutter trips, the AE Lock Memory is automatically canceled.

● **Releasing the AE Lock (AE Memory)**

1. To release the AE Lock (AE Memory), press in the AE Lock Button a second time. (At the same time, the exposure value measured at this moment will be locked.)
2. Pressing down the camera's shutter release will also release the AE Lock.
3. It can also be released by turning off the Main Switch or by changing the setting of the Mode Switch.

3. TAKING APERTURE-PRIORITY MANUAL EXPOSURE PICTURES

If the contrast of your subject is too harsh or if you want to over- or underexpose intentionally, use manual exposure settings.

- ① Set the GX680's lens aperture to suit your subject.
- ② Set the AE Finder FL's Mode Switch to AE.
- ③ Move the GX680's shutter speed selector away from AUTO and set it to any value between 8 and 1/400.
- ④ Point the camera at the various light and dark areas of

sync test button. (Fig. 22)

Synchro Test Button (Fig. 22-A)

Sync Cord (Fig. 22-B)

- ④ Simultaneously with the firing of the flash, the AE Finder's LCD will show an f-number.
- ⑤ Turn the Camera's aperture selector and set it to that f-number.
- ⑥ Frame your subject in the finder screen then take your picture by pressing down the Camera's shutter release.

Note:

When using the AE Finder as a flash meter, you'll have to set the Camera's shutter speed selector between 1/15 and 1/400 second, otherwise the f-number in the AE Finder's LCD will blink and the Finder won't function.

5. MAKING EXPOSURE COMPENSATIONS

The AE Finder FL is designed for TTL center-weighted reflected-light metering, but it is possible to obtain with it average light readings similar to those made with an incident light meter by taking readings of subject sectors having a reflection index of near 18% or by using a standard 18% reflector or the human skin (face or palm). And if you have formed a good idea of the kind of picture you want, that is, if you know exactly how you want to reproduce each of the various parts of your subject, then you can use the Fractional Exposure Control to expose your subject to suit your own personal taste.

- ① The Fractional Exposure Control (located on the right hand side of the AE Finder FL) will let you make exposure compensations up to plus or minus 2 1/2 stops. (Fig. 23)
- ② To increase exposure, turn the Fractional Exposure Control to the plus (+) side, and to reduce exposure, turn it to the minus (-) side.

- With the Finder set to the flash mode, only the f-number

your subject to check the changes in the shutter-speed values in the LCD as you scan your subject.

- ⑤ While scanning your subject, select the shutter speed that appeals to you then set the Camera's shutter speed selector to that speed.
- You can fine-tune each shutter-speed setting in 1/3, 1/2, or 2/3 stop increments or decrements with the Fractional Exposure Control if you wish. (See section entitled "Making exposure compensations).

Note:

The shutter speed value in the LCD will change as you scan the light and dark areas of your subject with the Camera, but when you press down the Camera's shutter release, the shutter will operate at the speed that has been set with the Camera's shutter speed selector.

In other words, if the Camera's shutter speed selector has been moved away from AUTO and set anywhere between 8 and 1/400, the shutter speed value in the LCD merely tells you what the correct exposing speed is. Remember, it has nothing to do with the actual shutter speed that will be used to expose your picture.

4. USING THE AE FINDER FL AS A FLASH METER

The AE Finder FL can be used as a TTL reflection type flash meter for measuring the light of flash units that are commonly used in photo studios.

- ① Plug the sync cord into the Camera's sync socket and set the AE Finder's Mode Switch to FLASH. The LCD will show a segmented line (- - -) instead of an f-number. (Figs. 20 & 21)

- ② Set the Camera's shutter speed selector for the subject you are taking (between 1/15 and 1/400 second) because the AE Finder FL will simultaneously measure the flash-discharged light together with all ambient lights.

- ③ Aim the Camera at the part of the subject you want to measure then fire the flash by pressing in the Camera's

in the LCD will change. Set the lens aperture to the f-number displayed in the LCD.

● **Examples of Exposure Compensation**

1. Exposing for the highlights
As a rule, if you want a white subject to turn out white, increase exposure by 2 stops (+2 stops).
2. Exposing for the shadows
As a rule, if you want a black subject to turn out black, reduce exposure by 2 stops (-2 stops).
3. If you are placing importance on the delineation of white or black subjects and want to bring out the details, as a rule you should increase or reduce exposure by 1 stop (± 1 stop).
- However, if your picture includes an ordinary subject or a subject having an average reflection index, it is recommended, to be on the safe side, that you do not make exposure compensations.

6. TAKING PICTURES WITH INSTANT FILM

The GX680's instant-film holder is not provided with a film speed selector, but when it is mounted on the Camera, the AE Finder FL will interlock with the Camera's ISO 100 film speed setting. Therefore, if the speed of the instant film you are using is slower or faster than ISO 100, you'll have to use the Fractional Exposure Control to make adjustments as shown below.

Instant Film ISO Speed	Fractional Exposure Control Setting
75	+1/2
80	+1/3
100	0
800	-3
3000	*mark

7. USING THE SF190mm LENS

Since the AE Finder FL is designed for full-aperture light metering, errors will occur if metering is done with the aperture stopped down. But the recommendation for the SF190mm lens is that focusing should be done with the aperture locked in stopped-down position — a condition in which the AE Finder cannot function.

When using the SF190mm lens, therefore, set the aperture first then release the aperture lock and take your picture with the aperture wide open (F8).

Note:

If the AE Finder FL is used with the aperture locked in stopped-down position:

- ① AE Mode
The shutter speed value in the LCD will blink and the AE Finder won't function.
- ② Flash Mode
The segmented line (- - -) showing in the LCD before light measurement will remain as it is and you won't be able to take a reading.

8. USING CAMERA MOVEMENTS (TILTS, SWINGS, ETC.)

Camera movements will prevent the AE Finder FL's light sensor from measuring the brightness of the subject accurately because the light that passes through the lens will be affected by the Fresnel rings of the finder screen. Do not use the AE Finder FL with the camera lens already tilted or swung to one side.

If you are using camera movements, measure the brightness of your subject first then tilt or swing the camera lens.

● With the AE Finder FL Set to the AE Mode

First, measure the light, press in the AE Lock Button (Memory Lock), then tilt or swing the lens and take your picture. (Tripping the shutter will release the AE Lock).

If you are taking several pictures in succession, follow the

procedure explained under "III. 3. Taking aperture-priority manual exposure pictures", then use the camera movement you want and take your picture.

● With the AE Finder FL Set to the Flash Mode

Measure the light, make the exposure settings, then tilt or swing the lens and take your picture.

FINDER CARE

- Wipe off rain and water droplets thoroughly from the Finder with a piece of clean, dry cloth then let it dry. After using the Finder in salt-water atmosphere near the ocean, wipe off the exterior thoroughly with a clean piece of cloth.
- Avoid leaving or keeping the Finder where it is hot or moist. Be careful because the interior of a car can build up heat. Also, do not keep the Finder in your wardrobe drawer because the gas emitted by mothballs and other insect repellents can harm the Finder.
- Do not use solvents, such as thinners and alcohols, to clean the Finder.
- Dust off the lens and glass parts with a lens brush and an air blower. Fingermarks are removed with a piece of clean cotton cloth (preferably washed beforehand) moistened with lens-cleaning fluid (commercially available) by wiping gently in a spiral motion, starting from the center then moving out toward the edges.
- As a whole, the major cause of electric troubles is dust and debris in the contact points. Just blow it away with an air blower. If you detect any fault that points to electric trouble, check the various contact points for hand grease, corrosion (from salts or certain gasses), and dust and debris. If the fault cannot be corrected by removing dust and debris, take your Finder to your nearest service station.
- It is usually impossible to repair a Finder that has been

immersed in water. Check with your service station to see what can be done.

- To keep your Finder in top shape at all times, have it inspected every one or two years. If you haven't used it for a long while, or if you are taking some important pictures, always check and test it beforehand.

SPECIFICATIONS

- **Magnifying Glass**
Interchangeable, 2.52X magnification, available in 8 refractive powers ranging from -4 to +3 diopters (the same magnifying glasses as those designed for the GX680 Camera's collapsible focusing hood).
- **Eyepiece Shutter**
Normally closed: can be opened by sliding a button and closed by releasing it; can also be locked in "Open" position.
- **Light Meter**
TTL normal-light metering, aperture-priority automatic shutter-speed setting; LCD displays selected aperture values and computed shutter speeds. Also, TTL flash-light metering with LCD displaying correct aperture value.
- **Main Switch**
On/Off toggle switch.
- **Mode Switch**
Can be set to FLASH, AE, and AEL (AE Lock).
- **Film Speed Selector**
Located on the GX680's dedicated film holder; can be set from ISO 25 to 1600 in 1/3-step increments; automatically sets to ISO 100 when holder is off (not mounted.)
- **Fractional Exposure Control**
Dialing type with 16 settings (up to $\pm 2 \frac{1}{2}$ stops and (-5).
- **Light Sensor**

SPD center-weighted sensing (TTL full-aperture type).

- **LCD Display**
Seven-segment illuminated indicators.
- **LCD Indications**
AE Mode
* Selected lens f-numbers (including 1/2-stop fractions).
* Computed shutter speeds (1/400 - 8-sec. in 1/3-step units).
* 1/400-sec. or 8-sec. indicator blinks if setting is not within interlocking range.
Flash Mode
(Before metering)
* Selected shutter speeds (1-step units); LCD indicator blinks if setting is not within 1/400 - 1/15 sec.
* Segmented line (- - -) indicator.
(After metering)
* Fractional f-numbers (0, 1/3, 1/2, and 2/3 stop).
- **Camera-Finder Interoperation**
AE Mode
* Automatic Finder operation by setting the GX680's shutter speed selector to AUTO.
* The LCD shows the correct shutter speed if the GX680's shutter speed selector is off AUTO.
Flash Mode
* Light measurement in combination with the GX680's sync test button.
- **Metering Range**
AE Mode
(F4, ISO 100)
* EV 1 (8-sec. F4) to EV 19.5 (1/400-sec. F45).
Flash Mode
(ISO 100)
Max. aperture — F64
- **AE Control**
Microcomputerized aperture-priority system.
- **Power Source**
Same power source as the GX680's.

- * Power is supplied by turning on the GX680's main switch.
- * Power is cut off when the GX680's lens is dismantled or mirror is up.

● **AE Lock**

The AE Lock can be activated only when the Mode Switch is set to AEL.

- ① Merely setting the Mode Switch to AEL has the same effect as setting it to AE.
- ② The AE Lock Button (Memory Button) must be pressed down in order to lock the exposure measurement. Pressing down the AE Lock Button will also lock the LCD indicator. (The Mode Switch must be set to AEL).
- ③ Pressing in the AE Lock Button a second time locks in the light measurement made the instant the Button was depressed once again. (The previous reading is automatically discarded).
- ④ Resetting the Mode Switch to AE automatically releases the AE Lock and returns the Finder to the condition described in ① above.

Notice:

Specifications are subject to change without notice.